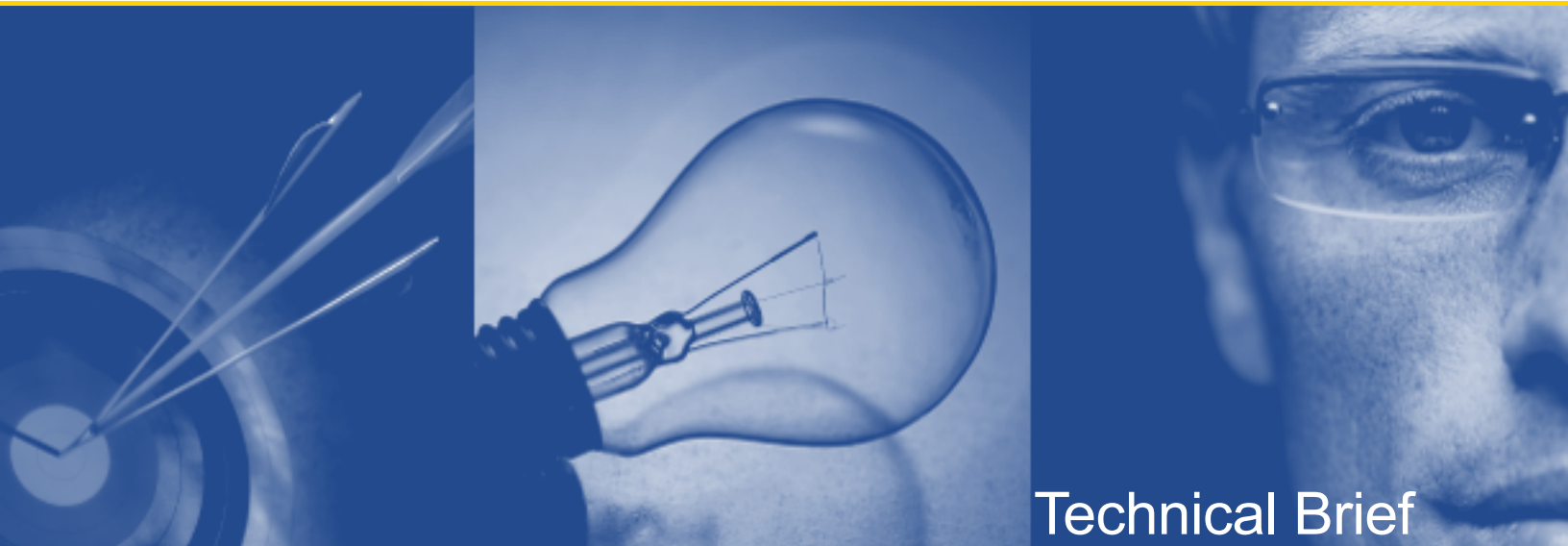


Toad® for Oracle v10

*Written by
Quest Software Inc.*



Technical Brief

**© 2009 Quest Software, Inc.
ALL RIGHTS RESERVED.**

This document contains proprietary information, protected by copyright. No part of this document may be reproduced or transmitted for any purpose other than the reader's personal use without the written permission of Quest Software, Inc.

WARRANTY

The information contained in this document is subject to change without notice. Quest Software makes no warranty of any kind with respect to this information. QUEST SOFTWARE SPECIFICALLY DISCLAIMS THE IMPLIED WARRANTY OF THE MERCHANTABILITY AND FITNESS FOR A PARTICULAR PURPOSE. Quest Software shall not be liable for any direct, indirect, incidental, consequential, or other damage alleged in connection with the furnishing or use of this information.

TRADEMARKS

All trademarks and registered trademarks used in this guide are property of their respective owners.

World Headquarters:
5 Polaris Way
Aliso Viejo, CA 92656
e-mail: info@quest.com

Please refer to our Web site (www.quest.com) for regional and international office information.

Updated—August 2009

CONTENTS

- INTRODUCTION 1**
- NEW DATA GRIDS 2**
- NEW ER DIAGRAM..... 3**
- NEW SEARCH BAR 5**
- NEW DIRECT SQL TUNING IN THE EDITOR..... 6**
- MULTI-TASK EXECUTION..... 10**
 - NOW WE ARE TRULY MULTI-TASKING ☺..... 13
 - SERVER, INSTANCE AND SCHEMA COMPARE 14
- ABOUT QUEST SOFTWARE, INC. 15**
 - CONTACTING QUEST SOFTWARE..... 15
 - CONTACTING QUEST SUPPORT..... 15

INTRODUCTION

The latest generation of Toad® for Oracle will soon make its appearance (early October 2009) so we thought it was time to peel back the covers and give you a peek at what's coming.

Toad for Oracle v10 has been a long time coming, primarily due to significant platform upgrades that now enable Toad to support Unicode.

Toad for Oracle v10 will have both new features and enhancements to existing features, all designed to augment user workflow and enable you to get your work done more productively, accurately and with better visibility into your work environment—whether you are a developer working in an unfamiliar schema or a DBA trying to manage multiple databases.

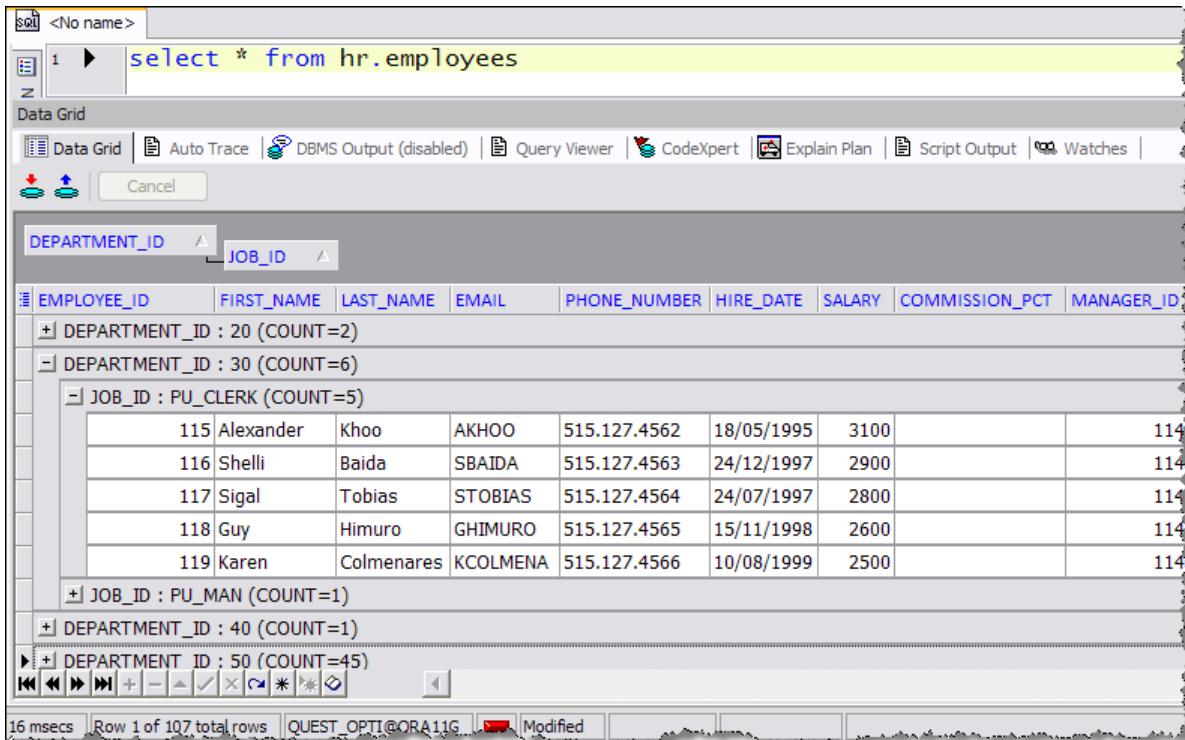
Below is a summary of the key user benefits in Toad v10:

1. **Usability**—enables users to discover more of Toad's features and ensures that the tasks they perform offer the maximum productivity and follow a logical workflow.
2. **Automation**—provides users with even more capabilities to maximize their productivity by creating and using automated workflow from regular tasks performed in Toad.
3. **Education**—enables users to discover a huge range of services related to Toad which will both extend their current knowledge and provide expert help when it's needed thus providing maximum value from their investment in Toad.
4. **Flexibility**—extends the use of Toad into regions where different character sets are used and provides a much simpler, coherent licensing mechanism.

So let's get into some of details on what's coming in Toad v10!

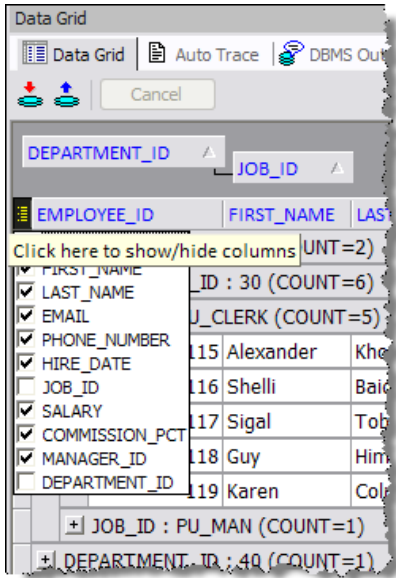
NEW DATA GRIDS

The Toad platform upgrade provides new data grids. These new grids offer far more productivity than their predecessors and are now applied throughout Toad so users will have a lot more consistency when it comes to a data grid's behavior.

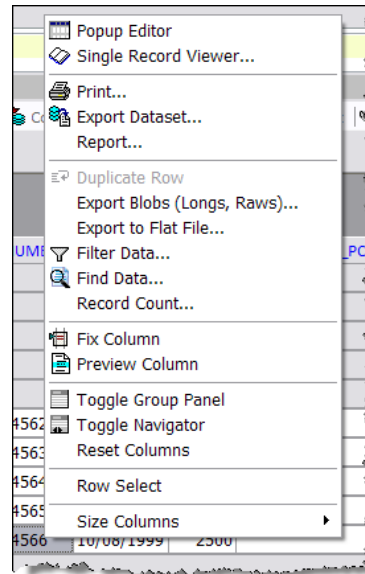


The new data grid shows customizable column headers, column grouping and sub-grouping as well as sub-totaling of records.

- You'll notice a new grouping region above the grid where you can drag and drop column headers that you want to group and sub-group.
- The data grid navigator is now located at the bottom of the grid, simplifying the toolbar.
- Column selection is now easier. A new button on the top left on the grid allows you to determine which columns you want to be visible.
- The right-click menu is more simplified and the 'Save As' feature has been renamed as 'Export Dataset'. The range of file format options to save to has not changed.



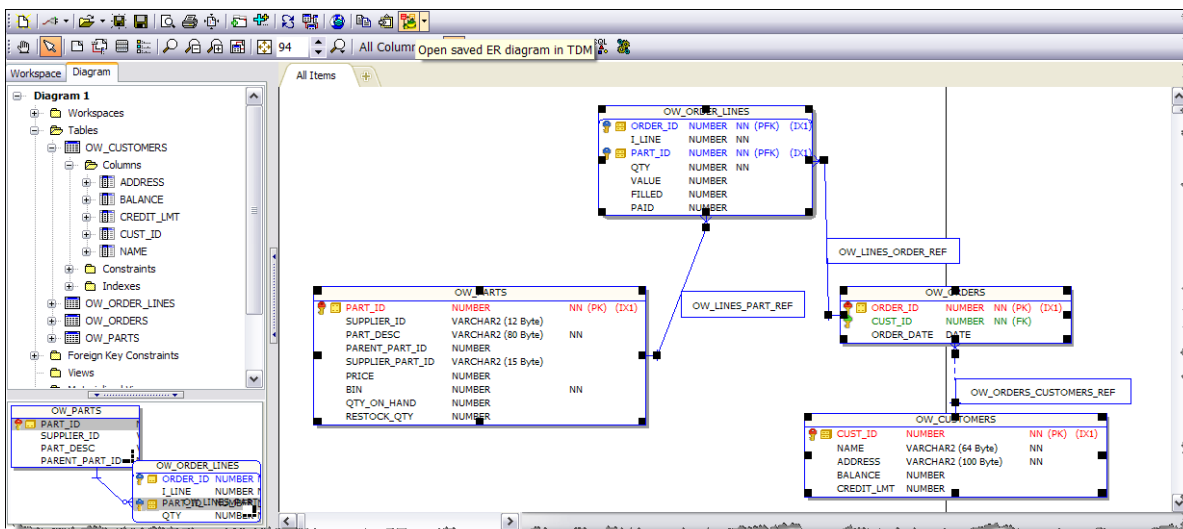
The simplified column selection.



The new right-click menu.

NEW ER DIAGRAM

Developers and DBAs need a simple way to visualize the database schema. The Toad ER Diagram window serves that purpose very well. The new ERD for Toad v10 is based on the same technology as our successful Toad® Data Modeler product and therefore provides far more capabilities than its predecessor (particularly when it comes to graphical manipulation and reporting).



The new ER Diagram showing schema objects.

There are a number of ways to include or add schema objects into the ER Diagram:

1. Right-click table in Schema Browser (defaults to five referential levels)
2. Use the Add Object button in ER Diagram
3. Drag and drop from Schema Browser
4. Drag and drop from the Object Palette
5. Drag and drop from Project Manager

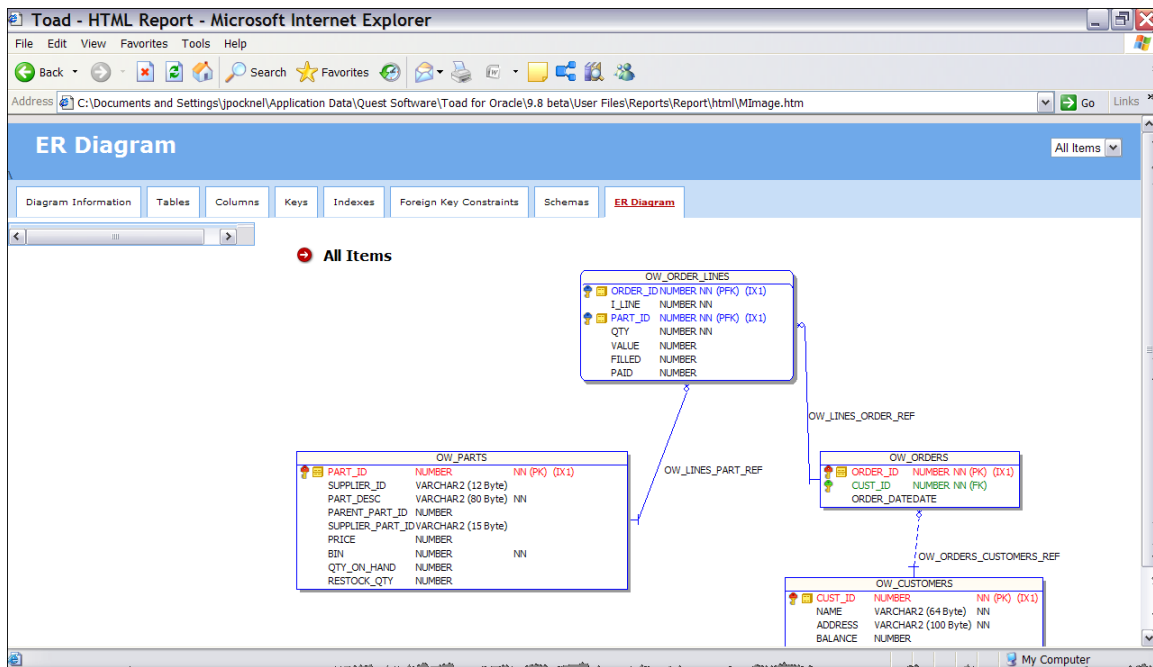
Zoom, Pan, Loupe and Fit-to-View are all available for maximum flexibility when working with large schemas. In addition, a grid can be displayed with objects being snapped-to-grid or objects aligned to each other to enable excellent close-up work. There is also an Autolayout button.

Notes and a Title block can be added for additional documentation and there is even a Category feature that allows you to assign a unique color to different groups of objects.

For printing purposes, multiple formats are supported up to A3 size and there is a fit-to-page feature.

Workspaces allow specific parts of a complex schema layout to be drawn separately, where that may be convenient, but the connections to the main diagram remain.

Diagrams can be exported into .bmp, .png and .jpeg format and reports can be generated in HTML. The HTML diagram is hyperlinked, allowing you to view object details simply by clicking on the object in the diagram.



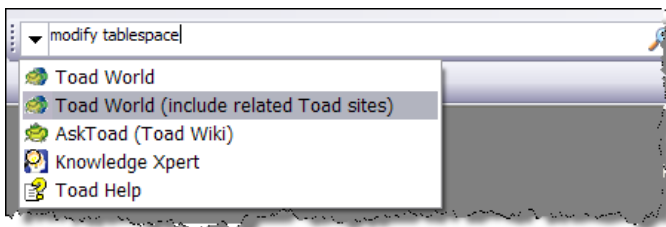
Schema HTML Report.

As always, if you also have a copy of Toad Data Modeler, you can reverse-engineer schema objects in the Toad ER Diagram to create a complete physical data model in Toad Data Modeler.

You can also create data for tables viewed in the diagram (Professional Edition and above).

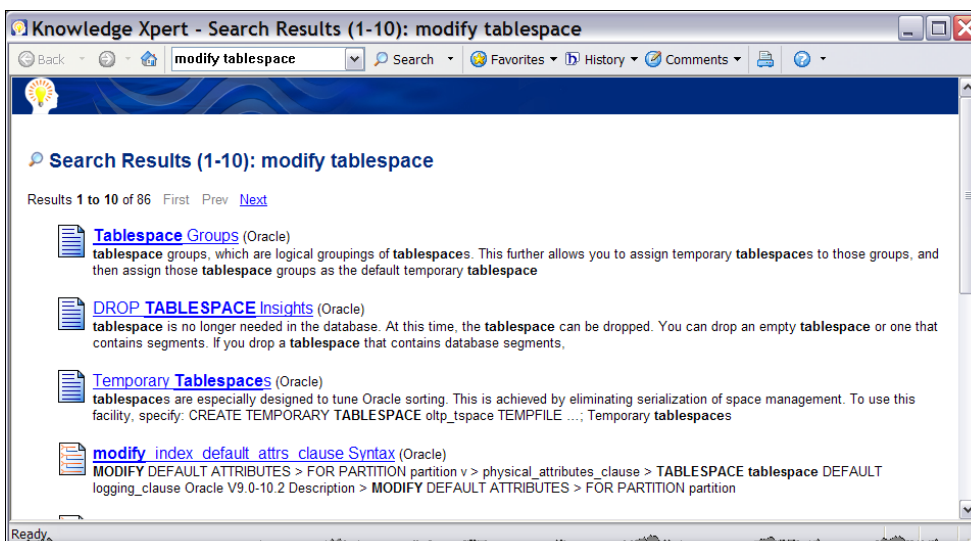
NEW SEARCH BAR

Our users are always looking for ways to get the most out of their Toad investment. Toad World (www.toadworld.com) provides the latest educational and training materials, including: videos, tech briefs, white papers, expert blogs, and tech tips from Toad-family product experts, and is quite popular. We thought it would be a good idea to enable a Toad user to perform a direct search on Toad World from Toad, as well as access other resources such as Knowledge Xpert (included with every copy of Toad and also includes PL/SQL developers and a DBA version) and AskToad (a Wiki with FAQs and a lot more)!



New Search Bar.

The ability to search for educational content will give you direct access to video clips, expert blogs, Oracle technology information and much more in-context with what you are doing. This will save you time and enhance your knowledge of Toad and Oracle.



Search results (Knowledge Xpert).

NEW DIRECT SQL TUNING IN THE EDITOR

For those users who already have Toad Xpert Edition or one of our two suites (Development Suite or DBA Suite), you will already be familiar with the SQL Optimizer for Oracle. This is also a standalone product. SQL Optimizer is a very powerful, comprehensive, yet easy to use SQL tuning tool for developers and DBAs.

However, sometimes you need to be able to quickly tune a SQL statement on-the-fly without opening the SQL Optimizer interface. Or maybe you are an application developer writing Java or .NET but have an apparent performance problem with a SQL statement and don't know what to do. If this is the case, then this new feature is for you!

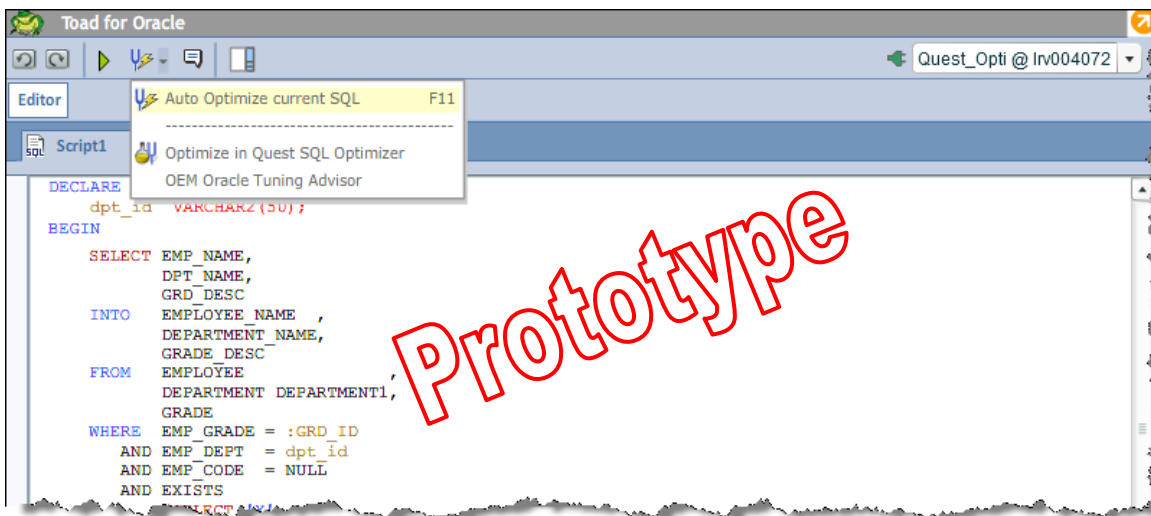
Direct SQL tuning in the Editor, as that implies, means giving you with sufficient capabilities within the Toad Editor itself to provide you with a number of potential SQL alternatives which perform better than your original. From these alternatives, you can chose the most suitable to give you the performance improvement you expect from your application. This new SQL tuning interface uses the power of SQL Optimizer to do all the "back-end" optimization processing.

You will be able to compare elapsed execution times graphically together with execution plans and other pertinent information. You still, ultimately, have the choice as to which SQL statement re-write to use in your application based on the evidence. Or, you can simply use the one which has the shortest elapsed time. The best alternative can then replace your original SQL statement leaving you with a faster application.

It's that simple.

Here's the process based on a prototype of what the finished feature will look like:

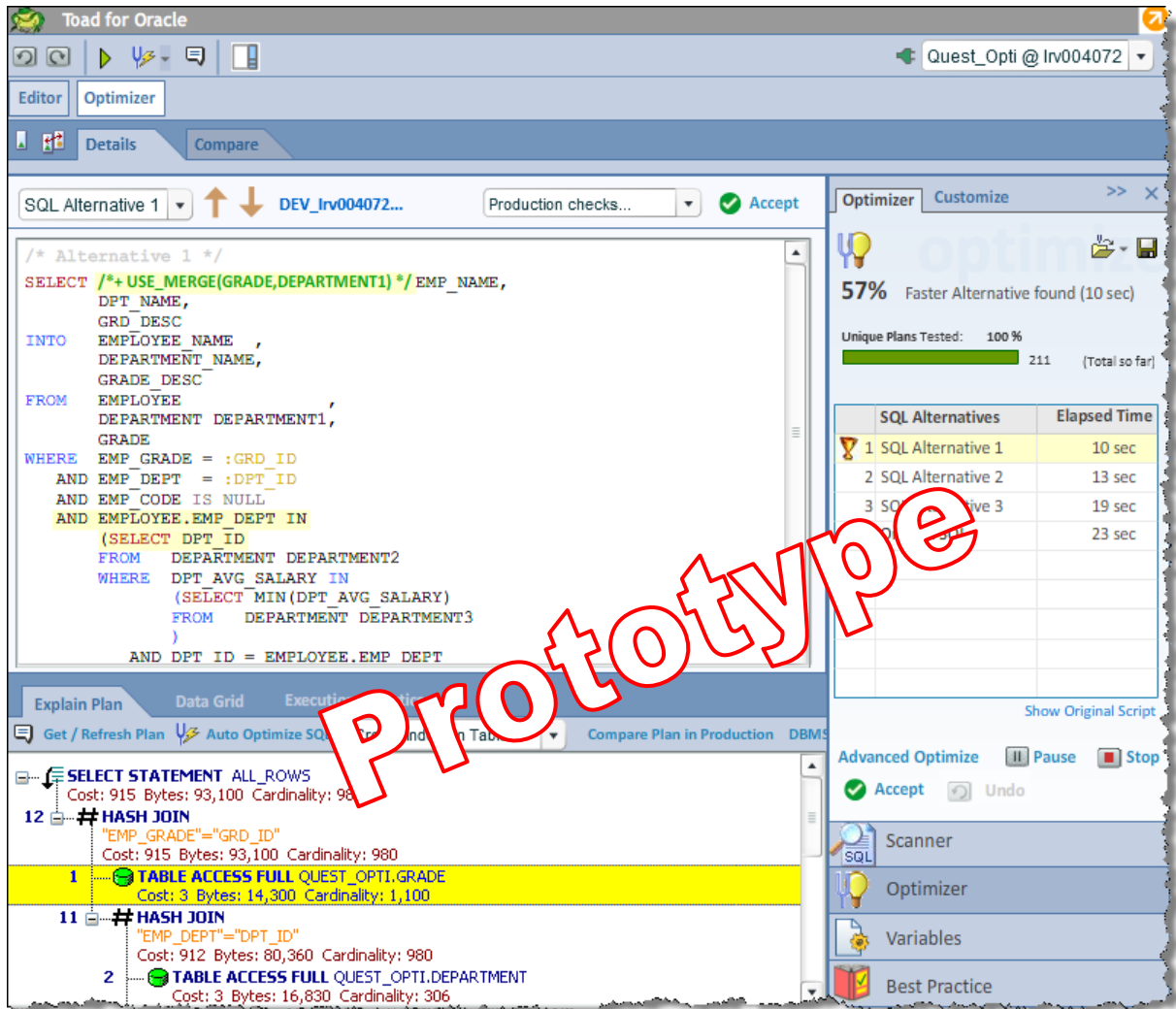
First, have your problematic SQL statement visible in the Editor, then select Auto Optimize current SQL. Notice that you can still fully launch the SQL Optimizer from here too.



Selecting Auto Optimize in the Toad Editor.

Next, accept the defaults and enter any bind variables if necessary and click OK.

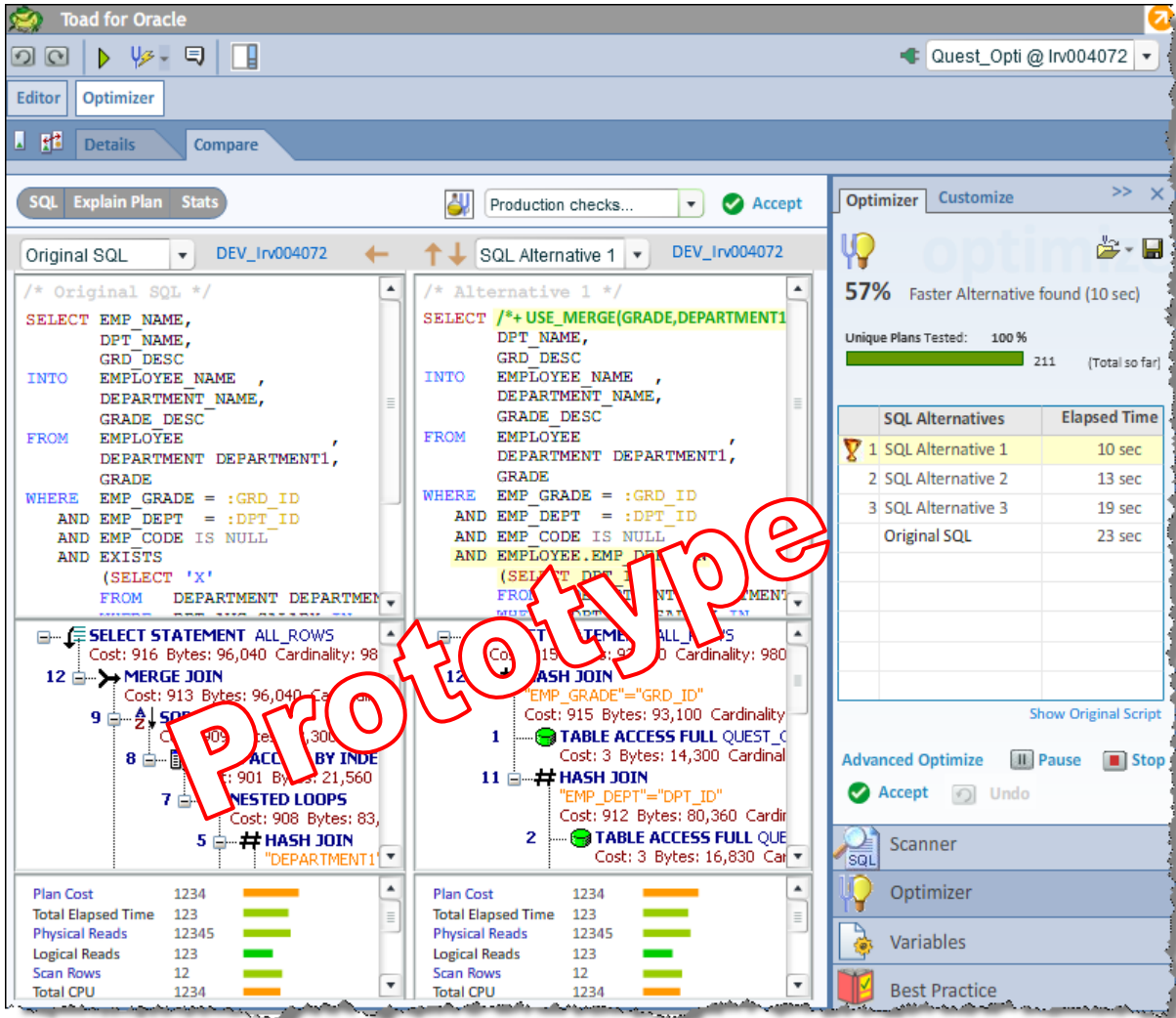
After processing, the SQL Optimizer determines a number of possible alternative SQL statements from which you can choose, along with all the important evidential information.



Presentation of suitable SQL alternatives for assessment

You can clearly see which alternative has the lowest elapsed time, but you can also view other information as necessary. also In addition, you have the option of trying an index build on a table used in the SQL statement to see if that might have a higher benefit.

You can compare the original SQL statement to the “best” alternative.



Comparison of best alternative with original SQL statement.

After deciding on the most suitable alternative, we make it really easy to return this modified SQL statement into your SQL code or PL/SQL program by simply clicking the Accept button.

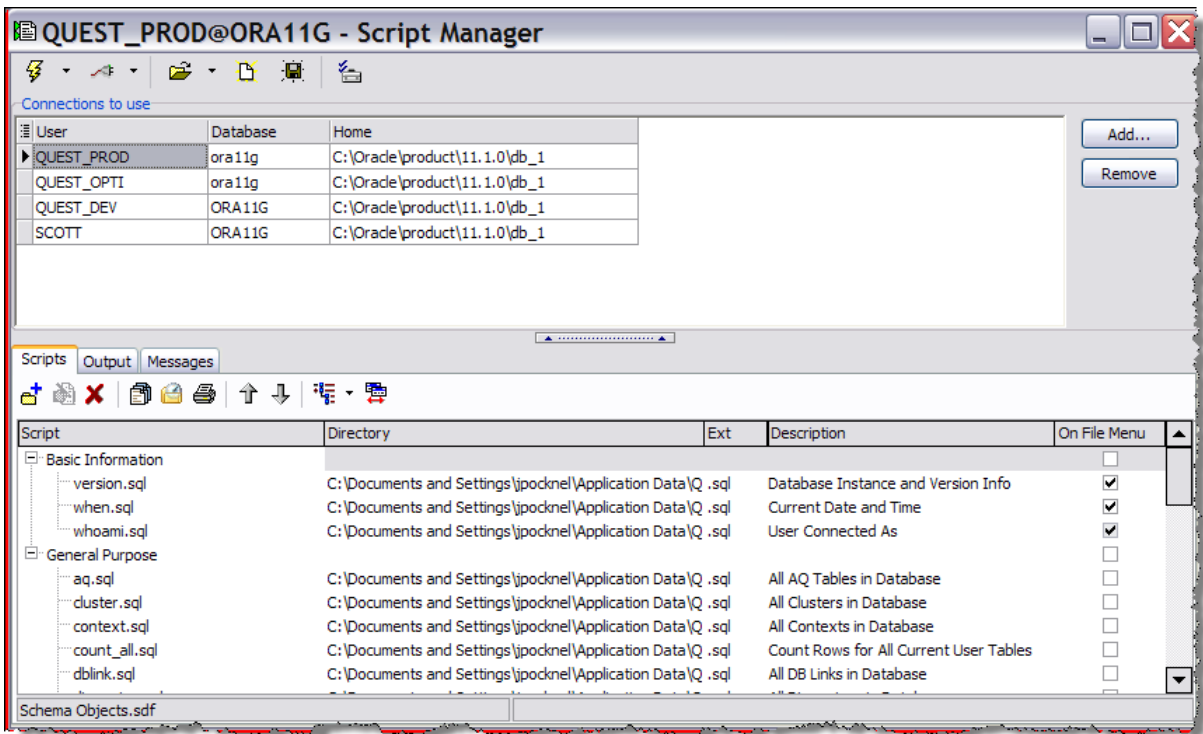
MULTI-TASK EXECUTION

You probably have routine tasks you often have to perform every day or every week and you probably wish there was some way you could automate them. Here are a couple of things we think you will like.

The first one is more for DBAs, but developers could use it too—Script Manager. DBAs sometimes have to run multiple scripts against a number of their managed databases, but they can only run them one at a time and then they have to repeat the process for each database. What if you could select ALL of your scripts and run them simultaneously against ALL of your databases?

Script Manager itself is not a new feature for Toad v10, but the ability to select a group of database connections against which you need to run a group of scripts is.

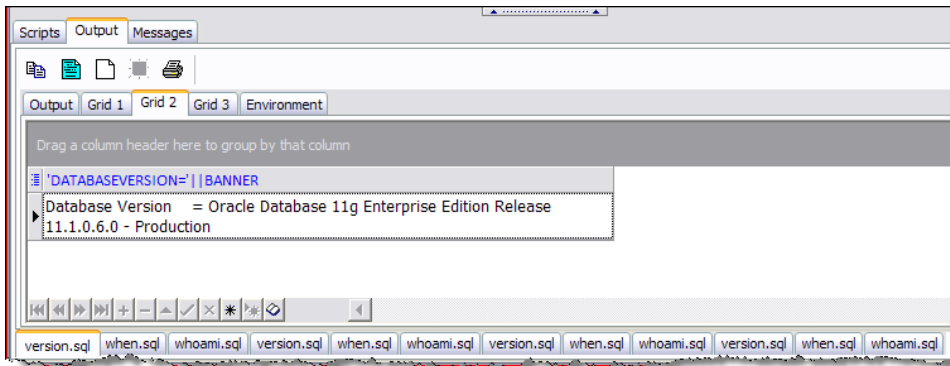
Here’s what the new Script Manager window looks like.



The enhanced Script Manager window with connections panel.

The “Connections to use” panel is new. It will be pre-populated with any currently active connections, but you can use the Add button to select additional ones from the main Connections window.

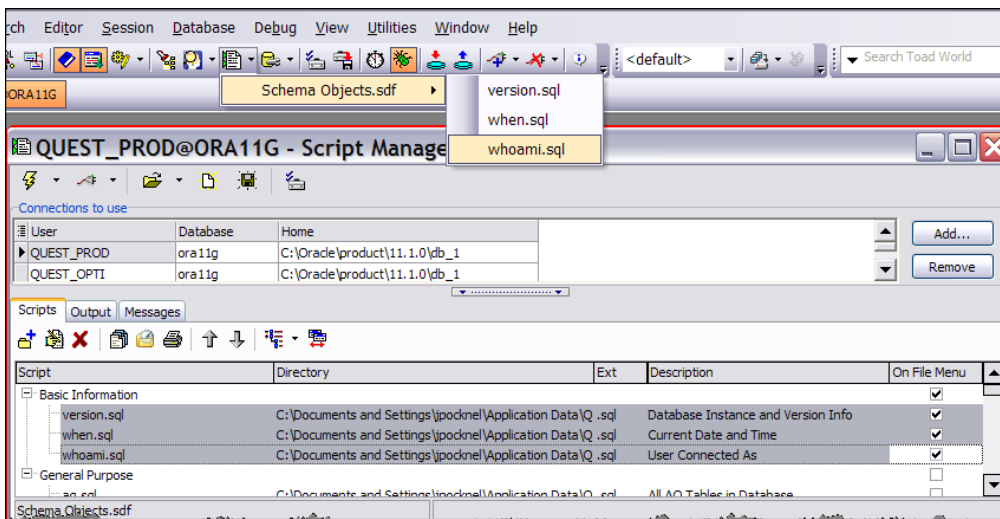
You can then highlight the scripts you wish to execute (the same way you did before) and click the Execute button. This lets you execute scripts in this window or the Quest ScriptRunner tool. The outputs from each script run will appear in a tabbed region in the Output tab. See below.



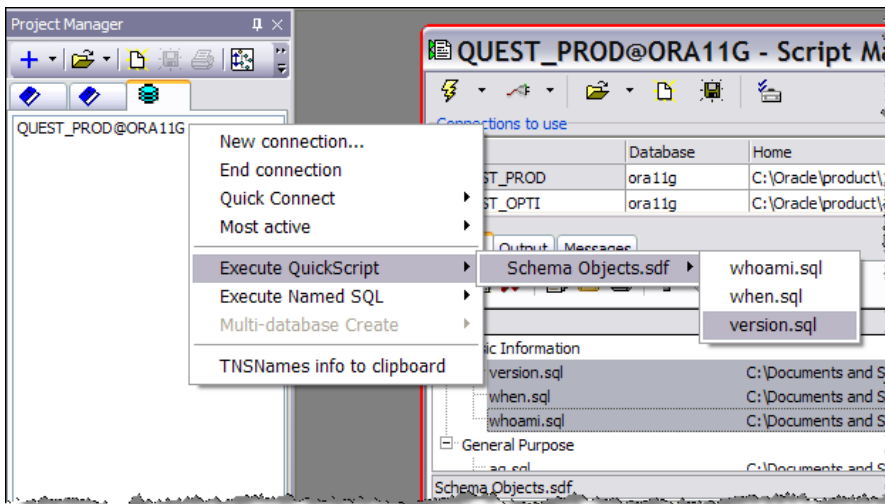
There is also an options button which lets you select the Editor as the default. A separate Editor window will open for each connection.

Also notice the “On File Menu” column in the lower data grid in the previous and following screen shots. Whatever scripts you check here will appear in the following three places in Toad:

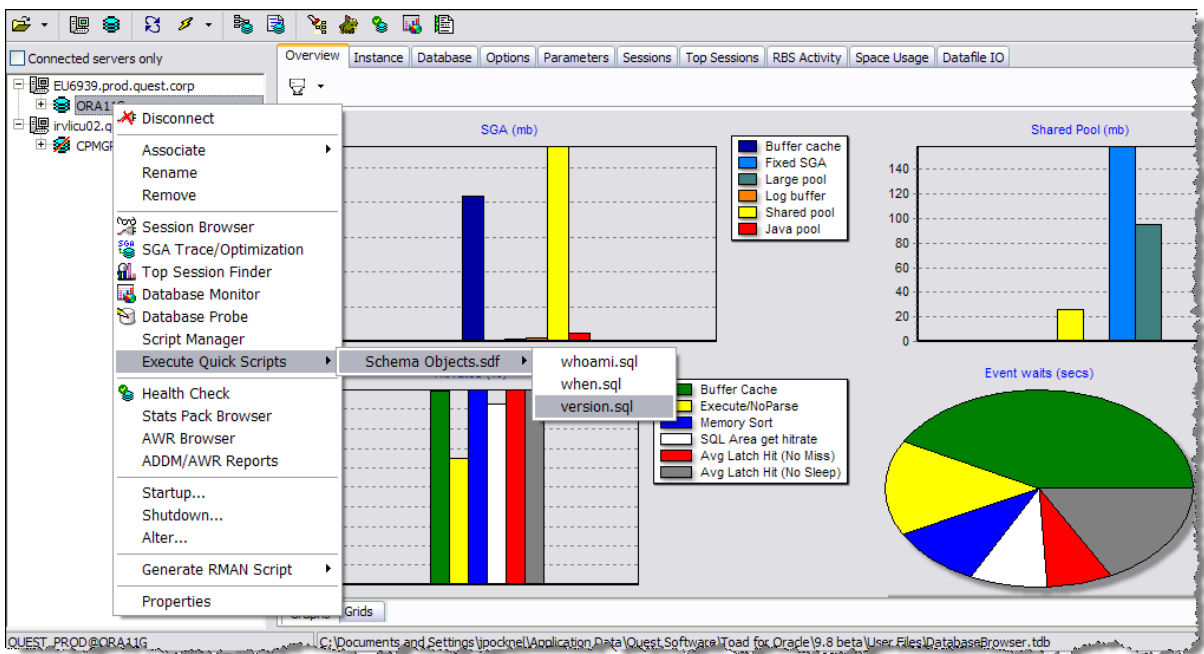
The Script Manager button (down arrow):



Project Manager (via the connections tab):



Database Browser (right click a database instance): This part is new for Toad v10.



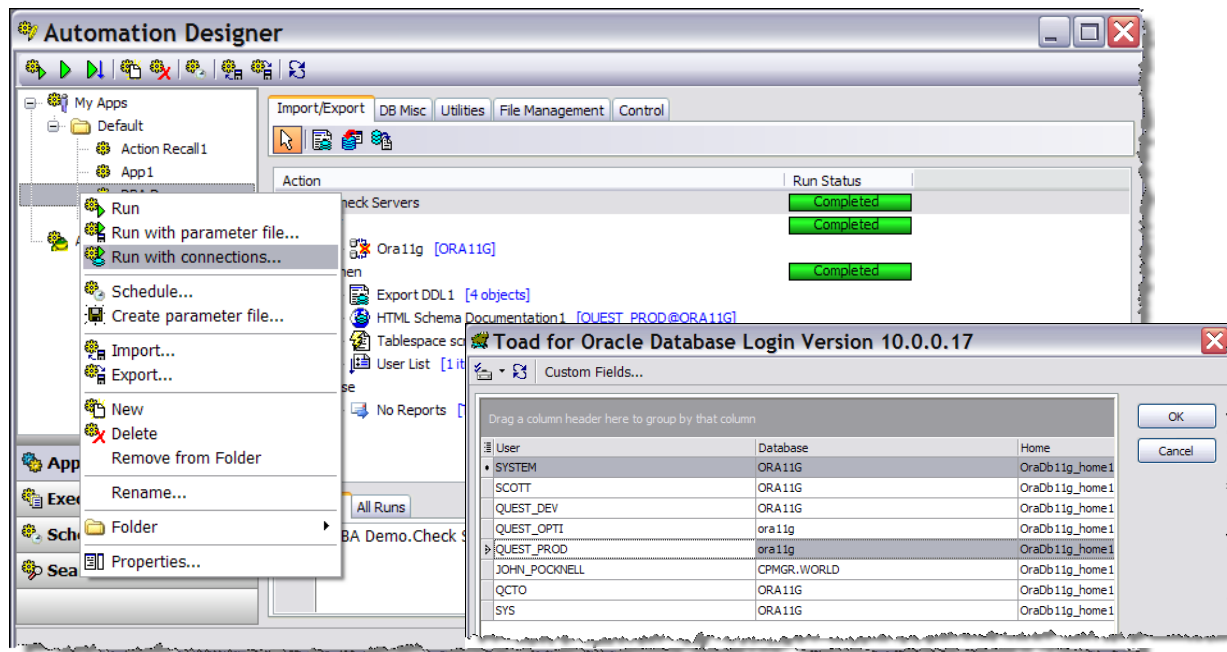
This gives you the flexibility to run one of more regularly executed scripts on-the-fly (without having to open the Script Manager window) from multiple places where it is most logical to do so.

The Database Browser launch point is perhaps the most likely, since DBAs can use it to view all of their servers and databases in one single screen.

Another type of multi-task execution which is now available in Toad v10 is an extension to our current AppDesigner feature (this feature will be called Automation Designer in Toad v10).

Automation Designer allows you to save tasks you normally perform interactively in Toad, (from saving data to a file, comparing two schemas to running a database health check) select and execute them on-the-fly. For more information on this feature, please refer to [this blog article published on Toad World](#).

In Toad v10, you now have the capability to execute these tasks (or what we call Actions) or groups of tasks saved as a sequential workflow (or what we call Action Sets) against multiple database connections simultaneously.



The enhanced Automation Designer showing multi-connection execution.

Here, you can see an Action Set in the right panel with a selection of tasks which can be executed sequentially, such as Export DDL, Schema reports, script execution, etc.

If you right-click an App (Action Set), you can select which database connections you want to run these tasks against. The Connections window opens and you can multi-select which ones to use.

Now we are truly multi-tasking 😊

With Script Manager and Automation Designer, you can reallocate the time spent performing routine tasks to focus on more pressing matters.

Server, Instance and Schema Compare

Single-window server, instance and schema compare makes it easier to manage and automate the comparison and synchronization of multiple servers hosting multiple Oracle databases with different configurations.

The Toad for Oracle v10 beta program is well underway, enabling Toad users who are on the full commercial version to perform a side-by-side install of the beta for testing, and providing the Toad development team with direct feedback.

The Toad Beta community is hosted by the Toad development team so they can provide instant dialogue with beta testers —this means any tweaks can literally be performed in minutes!

If you are interested in participating, please click this link:

www.toadsoft.com/beta.html

Please note that any future plans represent our intentions as of the date hereof, and our development plans and priorities are subject to change due to competitive factors, availability of resources and other matters common to all independent software vendors. Accordingly, these general indications of development schedules should not be relied upon if making a purchasing decision and should not be interpreted or construed as any form of a commitment that Quest will ultimately release any or all of the above-described products or features on the schedule or in the order described, or at all. The content, release, and timing of any features or functionality described above remains at the sole discretion of Quest Software, Inc.

ABOUT QUEST SOFTWARE, INC.

Quest Software, Inc., a leading enterprise systems management vendor, delivers innovative products that help organizations get more performance and productivity from their applications, databases, Windows infrastructure and virtual environments. Quest also provides customers with client management through its ScriptLogic subsidiary and server virtualization management through its Vizioncore subsidiary. Through a deep expertise in IT operations and a continued focus on what works best, Quest helps more than 100,000 customers worldwide meet higher expectations for enterprise IT. Quest Software helps organizations deliver, manage and control complex database environments through award-winning products for Oracle, SQL Server, IBM DB2, Sybase and MySQL. Quest Software can be found in offices around the globe and at www.quest.com.

Contacting Quest Software

Phone:	949.754.8000 (United States and Canada)
Email:	info@quest.com
Mail:	Quest Software, Inc. World Headquarters 5 Polaris Way Aliso Viejo, CA 92656 USA
Web site	www.quest.com

Please refer to our Web site for regional and international office information.

Contacting Quest Support

Quest Support is available to customers who have a trial version of a Quest product or who have purchased a commercial version and have a valid maintenance contract. Quest Support provides around the clock coverage with SupportLink, our web self-service. Visit SupportLink at <http://support.quest.com>

From SupportLink, you can do the following:

- Quickly find thousands of solutions (Knowledgebase articles/documents).
- Download patches and upgrades.
- Seek help from a Support engineer.
- Log and update your case, and check its status.

View the **Global Support Guide** for a detailed explanation of support programs, online services, contact information, and policy and procedures. The guide is available at: [http://support.quest.com/pdfs/Global Support Guide.pdf](http://support.quest.com/pdfs/Global%20Support%20Guide.pdf)